

Think you see all of your financial **blind spots?**

Your assessment results will surprise you.

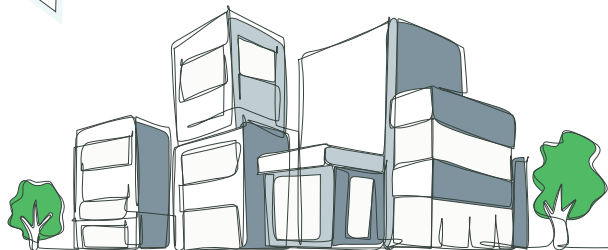
Client assessment results

Academic Medical Center

\$1.6B NPR | Southeast

"We're confident our performance metrics are stable."

"We don't see any evidence of revenue leakage."



\$90M Total Findings

\$47M

one-time cash acceleration opportunity

\$43M

annual revenue lift opportunity

Summary of findings:

- > Inadequate collaboration between revenue cycle + clinical areas hindering optimal performance across acute + physician operations
- > No denial avoidance structure
- > Shortage of automation for charge entry, cash posting + claims status
- > Incomplete set of monthly, quarterly + annual revenue cycle goals

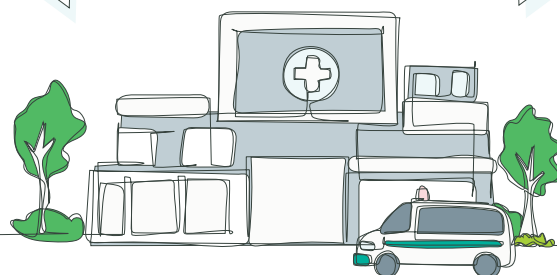
Client assessment results

22-Facility System

\$3.5B NPR | Midwest

"We can't seem to determine the root cause."

"We're aligned on the need for performance improvement."



\$199M Total Findings

\$122M

one-time cash acceleration opportunity

\$76M

annual revenue lift opportunity

Summary of findings:

- > Insufficient RCM vendor oversight
- > Limited standard procedures documentation
- > Significant AR gaps due to Epic configuration
- > System governance siloed in IT + lacking operational collaboration
- > Inconsistent quality + productivity gaps across departments + locations

Unlock your revenue potential today. [Ensemblehp.com/contact](https://ensemblehp.com/contact)